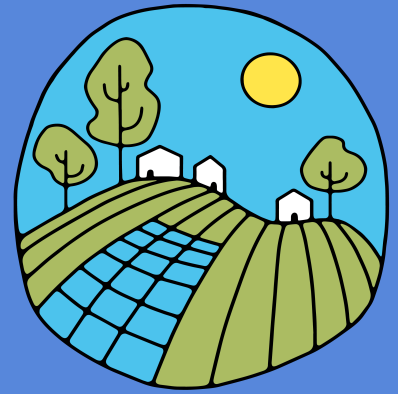


# Your Go Electric Plan



- Step 1** Record the age of your gas appliances and any petrol/diesel cars (check receipts or the appliance nameplate).
- Step 2** Choose your future electric appliances and/or vehicle.
- Step 3** Prioritise the order of replacing any required appliances and/or vehicle.

### Tips:

- Prioritise replacing appliances that are more than 10 years old. This can fast track your transition to an all-electric home
- Replace gas heating, cooktop and oven to improve indoor air quality
- Install solar PV to further reduce your running costs
- Improve the insulation and seal gaps in your home to reduce heating and cooling bills.
- Use the Climate Council [Calculator](#) to calculate your savings

We are here to help. Go to: [renewablecobargo.com](https://renewablecobargo.com)

Join the clean energy future and make your home all-electric. Use this plan to prepare so that when appliances need replacing, you're ready to make the switch.

Your household could save up to 75%\* per year on your bills.




### Key

**Good, Better, Best** - Ranking of solution based on quality, efficiency and best for the environment.

**\$-\$\$\$+**: Upfront cost price range.

Current appliance	Age of current appliances (years)	Go Electric with an	When could I replace?
Gas heating		<input type="checkbox"/> Split system reverse cycle air conditioning (Good, Better, <b>Best</b> ) \$-\$\$ <input type="checkbox"/> Ducted Reverse Cycle air conditioning (Good, <b>Better</b> , Best) \$\$\$ <input type="checkbox"/> Heat pump hydronic heating (Good, Better, <b>Best</b> ) \$\$\$+ <input type="checkbox"/> Electric heater ( <b>Good</b> , Better, Best) \$	
Gas hot water		<input type="checkbox"/> Electric heat pump (Good, Better, <b>Best</b> ) \$-\$\$\$ <input type="checkbox"/> Electric storage (with solar and timer) (Good, <b>Better</b> , Best) \$	
Gas cooktop		<input type="checkbox"/> Induction stove (Good, Better, <b>Best</b> ) \$-\$\$\$ <input type="checkbox"/> Electric stove (Good, <b>Better</b> , Best) \$-\$\$	
Gas oven		<input type="checkbox"/> Electric oven \$-\$\$\$	
Petrol or diesel car		<input type="checkbox"/> Electric bike \$-\$\$ <input type="checkbox"/> Electric vehicle \$\$-\$\$\$+	

# Key appliances for an all-electric home

Appliance	Description	Benefits	Tips and resources	Council programs and other rebates
<b>Solar panels and GreenPower</b> 	<ul style="list-style-type: none"> <li>✓ Solar panels convert sunlight into free electricity for use in your home</li> <li>✓ Any excess electricity goes back to the electricity grid or used to charge a battery</li> </ul>	<ul style="list-style-type: none"> <li>✓ Power your home with renewable energy</li> <li>✓ Solar can make your electric appliances free to run</li> <li>✓ Solar usually pays for itself in 3-5 years</li> <li>✓ Anyone can support more renewable energy in Australia by choosing GreenPower</li> </ul>	<ul style="list-style-type: none"> <li>✓ Run your electric appliances during the day to maximise savings</li> <li>✓ <a href="#">Check your electricity plan</a> to make sure you're getting the best deal</li> <li>✓ Check Greenpeace's <a href="#">Green Electricity Guide</a> when choosing a GreenPower retailer</li> </ul>	NSW Government <a href="#">Low Income Household Rebate Swap for Solar</a>
<b>Electric heating</b> 	<ul style="list-style-type: none"> <li>✓ Can be single unit, many units or whole of house (ducted)</li> <li>✓ Single units are the cheapest to run</li> </ul>	<ul style="list-style-type: none"> <li>✓ Can heat your home in winter and cool it in summer</li> <li>✓ In winter, reverse cycle air-conditioning is 3-4 times more efficient than a standard electric heater or a gas space heater</li> </ul>	<ul style="list-style-type: none"> <li>✓ Clean filters regularly</li> <li>✓ In winter - set thermostat to 18-20°C</li> <li>✓ In summer set thermostat to 23-25°C</li> <li>✓ Choose a natural refrigerant such as R32</li> <li>✓ For more information visit <a href="#">Renew</a></li> </ul>	NSW Government <a href="#">Low Income Household Rebate Swap</a>  NSW Government <a href="#">Upgrade your Air Conditioning</a>
<b>Electric heat pump hot water</b> 	<ul style="list-style-type: none"> <li>✓ Heat is absorbed from the air outside and transferred to the water in the tank</li> </ul>	<ul style="list-style-type: none"> <li>✓ 3-5 times more efficient than an electric/gas hot water heater</li> </ul>	<ul style="list-style-type: none"> <li>✓ Choose a heat pump with a natural refrigerant</li> <li>✓ Look for systems with control options (such a timer so you can use your solar energy)</li> <li>✓ If your current water heater dies, ask for a temporary system while waiting for an electric heat pump</li> <li>✓ For more information visit <a href="#">Renew</a></li> </ul>	NSW Government <a href="#">Upgrade your Hot Water</a>
<b>Induction cooktop</b> 	<ul style="list-style-type: none"> <li>✓ If a magnet sticks to your cookware then it is compatible</li> <li>✓ Stainless steel and cast iron work well</li> </ul>	<ul style="list-style-type: none"> <li>✓ Improved air quality</li> <li>✓ Safe</li> <li>✓ Fast and efficient</li> <li>✓ Greater temperature range</li> <li>✓ Easy to clean</li> <li>✓ Cooler kitchen</li> </ul>	<ul style="list-style-type: none"> <li>✓ Check with an electrician to see if you need switchboard upgrades</li> <li>✓ Choose electric cooktop alternatives if you have a pacemaker</li> <li>✓ Portable induction cooktops are cheap, can plug into any wall, and are a great place to start</li> <li>✓ For more information visit <a href="#">Choice</a> or <a href="#">Renew</a></li> </ul>	No rebates currently available.
<b>Electric Car or Bicycle</b> 	<ul style="list-style-type: none"> <li>✓ Electric cars run on electricity rather than petrol or diesel</li> <li>✓ Plug-in hybrid electric vehicles run on both electricity and petrol</li> </ul>	<ul style="list-style-type: none"> <li>✓ Electric cars are cheap to run and need very little maintenance</li> <li>✓ Can be charged on clean renewable energy</li> <li>✓ Non-polluting and quiet to drive and ride</li> <li>✓ Electric and cargo bikes are a great alternative to using a car</li> </ul>	<ul style="list-style-type: none"> <li>✓ Consider an electric bike before investing in a car</li> <li>✓ Use the <a href="#">Electric Vehicle Council cost calculator</a></li> <li>✓ Consider location and charging speeds for home charging</li> <li>✓ Find public charging stations at <a href="#">Transport for NSW</a></li> </ul>	NSW Government <a href="#">Electric Vehicle Rebate</a>

## Other Resources:

The Climate Council's [Bill Savings Simulator Your Home](#), Australia's guide to environmentally sustainable homes  
[My Efficient Electric Home Facebook group](#)

\* <https://renew.org.au/research/limiting-energy-bills-by-getting-off-gas/>

